



II BT4



II CT6



ISO9001:2015



**Etbaissde**<sup>®</sup>  
SMART SENSOR

# DPI 系列 现场在线 --- 测量仪表



**宝鸡百事得控制技术有限公司**

BAISSDE CONTROL TECHNOLOGY CO.,LTD

地址：陕西 宝鸡高新大道195号J座 邮编：721014

网址：[www.baissde.com](http://www.baissde.com)

邮箱：[www.baissde@126.com](mailto:www.baissde@126.com)

电话：0086 917-3227922

传真：0086 917-3227933

24 小时服务电话：18729717095

**宝鸡百事得控制技术有限公司**

BAOJI BAISSDE CONTROL TECHNOLOGY CO.,LTD



# COMPANY PROFILE

## 关于百事得

百事得 (ETbaissde) 致力于提供创新, 优质的压力、液位、差压、温度、流量、容积仪、PH计、电导率仪、有(无)纸记录仪、数显控制仪在线测量仪表和盘装控制仪表的产品服务。如今已颇有声誉。公司在稳步提高效率的基础上, 不断使用创新技术开发新产品, 百事得 (ETbaissde) 之所以在国内国际市场上取得领先地位, 其主要原因不仅在于产品的高度可靠, 还在于其产品能快速应对市场挑战, 满足客户不同需求。

百事得 (ETbaissde) 公司不仅拥有核心的专利技术, 还有专业的技术开发团队和经验丰富的销售工程师, 完全有能力在合作的基础上为客户提供专业的技术咨询和服务。

百事得 (ETbaissde) 严格遵守 ISO9001:2008 质量体系标准, 对产品的质量控制系统做到出厂检验合格率 100%, 确保用户使用的安全可靠, 性能稳定的最新技术产品。

Baissde (ETbaissde) is committed to providing innovative, high quality pressure, liquid level, differential pressure, temperature, flow, volume meter, PH meter, conductivity meter, there is (not) paper recorder, digital display control instrument online measuring instrument and control instrumentation products and services. Now there is quite a reputation. Company steadily improve efficiency on the basis of the use of innovative technologies to develop new products constantly, Baissde (ETbaissde) have the lead in the domestic and international market, the main reason is not only the product of highly reliable, also lies in its products can quickly respond to market challenges, meet customers different requirements.

Baissde (ETbaissde) Company not only possesses core patented technologies, but also has a professional technical development team and experienced sales engineers. It is fully capable of providing professional technical consultation and services to customers on the basis of cooperation.

Baissde (ETbaissde) strictly adheres to the ISO9001:2008 quality system standard, ensuring a 100% factory inspection pass rate for its product quality control system, and guaranteeing the safety, reliability, and stable performance of the latest technological products for users.



## 百事得(ETbaissde)-您工业控制过程不可缺少的合作伙伴

在工业控制领域最重要的是确保生产过程中现场仪表的可靠性和稳定性, 运行过程中的运营成本, 现场仪表可以提供各种与生产过程相关的技术信息, 确保高质量的生产管理和控制, 测量仪表的设计还是传感器与生产设备的连接都必须满足设计规程要求, 易于安装, 方便调试, 明确的技术性能提示, 人性化的功能设计, 安全的整体设计, 满足不同工业领域要求。

## Baissde(ETbaissde)-an indispensable partner for your industrial control process

In the field of industrial control, the most important thing is to ensure the reliability and stability of field instruments during the production process, as well as the operational costs during operation. Tables can provide various technical information related to the production process, ensuring high-quality production management and control. The design of measuring instruments or sensors All connections with production equipment must meet the requirements of the design regulations, be easy to install, convenient to debug, have clear technical performance prompts, and feature humanized functions. The overall design is safe and comprehensive, meeting the requirements of different industrial fields.

## 公司资质/Qualification



## 外壳性能/The shell performance

非接触部分的设计必须满足不同地区工业室外使用，对湿度、沙尘、温差、水淹、防潮、盐雾、腐蚀空气、极低极高地区温差、隔爆型适用于 Ex I 类，II 类，2 区；本质安全型，适用于 I 类，II 类，1 区。电气设计符合欧盟规程、日照辐射、还具有很高的防护等级（IP67）应用，仪表外壳采用特殊设计表面进行树脂涂层。

The design of the non-contact part must meet the requirements for outdoor industrial use in different regions. It should be resistant to humidity, sand and dust, temperature differences, waterlogging, moisture-proofing, salt spray, corrosive air, and temperature differences in extremely low and high regions. The flameproof type is suitable for Ex Class I, II, and Zone 2; the intrinsically safe type is suitable for Class I, II, and Zone 1. The electrical design complies with EU regulations, solar radiation protection, and has a very high protection level (IP67) application. The instrument housing is specially designed with a resin coating on the surface.

化工、石油、炼油、火电、焦化、钢铁、冶金、化肥、污水处理、造纸、汽机、供热锅炉、自来水管网、纺织、机械、空压机、液压行业的气体、液体、流动性介质测量。工业仪表在设计过程中首先考虑的是产品在使用过程中的安全性，可靠性，稳定性，技术的先进性。百事得（Etbaissde）所提供的每一台测量仪表根据不同工业要求，对测量介质不同，可选择不同的测量膜片，模块化的电路设计方便仪表维修。仪表的调节功能全部是与电子腔隔离设计，在不打开仪表密封盖的情况下完成对仪表的零位调整，仪表组态、量程迁移功能，低铜高铝精密铸造壳体防护等级达到了 IP67 级。同时，为防止氧化造成壳体腐蚀，在壳体表面喷涂环氧树脂保护层。

## 材料要求/Material requirements

测量膜片奥氏体 1.4404 欧洲标准和美标 316L 作为弹性膜片和过程介质接触，特殊腐蚀过程介质可选择 Hastelloy c(哈氏-c)、monel(蒙乃尔合金)、Tantalum(钽)。  
The austenite 1.4404 of the measuring diaphragm is in contact with the process medium in accordance with the European standard and the American standard 316L. For special corrosive process media, Hastelloy c (Hastelloy c), monel (Monel alloy), and Tantalum (tantalum) can be selected.

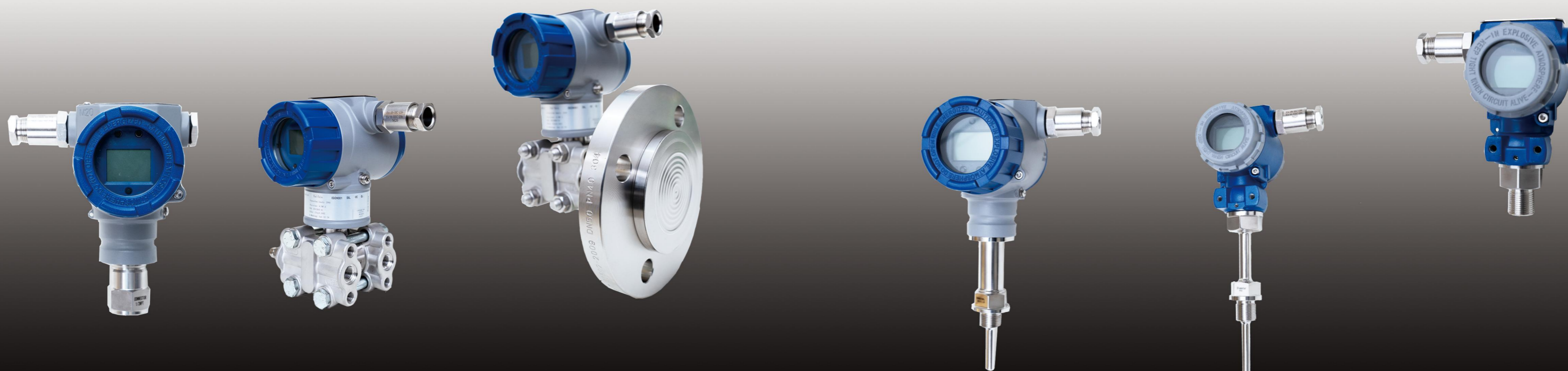
## 过程接口/The process interface

M20x1.5、G1/2、G1/4、1/2NPT、1/4NPT、法兰连接标准符合 ANSI Class、BS 和 DIN 规范要求。  
M20x1.5, G1/2, G1/4, 1/2NPT, 1/4NPT, flange connection criteria are in accordance with ANSI Class, BS and DIN specification requirements.



# 工业型设计在线仪表 Industrial design online instruments

Measurement of gases, liquids and flowable media in the chemical, petroleum, oil refining, thermal power, coking, steel, metallurgy, fertilizer, sewage treatment, papermaking, turbine, heating boiler, water supply network, textile, machinery, air compressor and hydraulic industries. In the design and manufacture of industrial instruments, the first considerations are the safety, reliability, stability and technological advancement of the products during use. Each measuring instrument provided by baissde (Etbaissde) can be equipped with different measuring diaphragms based on different industrial requirements and measurement media. The modular circuit design facilitates instrument maintenance. All the adjustment functions of the instrument are designed in isolation from the electronic cavity. The zero position adjustment of the instrument can be completed without opening the instrument's sealing cover. The instrument configuration and range migration functions are achieved by the low-copper and high-aluminum precision casting shell, with a protection level reaching IP67. Meanwhile, to prevent oxidation from causing corrosion of the shell, an epoxy resin protective layer is sprayed on the surface of the shell.



## 产品标示/Product Labeling

工业在线仪表除了安全的外壳设计和高等级的防护要求外，仪表的本体标识也是产品不可或缺的一部分，百事得（ETbaissde）DPI 系列测量仪表在每只产品的标识上都明确标示出产品的所有数据。

In addition to the safe housing design and high-level protection requirements, the body identification of industrial online instruments is also an indispensable part of the product, baissde(ETbaissde) DPI series measuring instruments clearly indicate all the data of the product on the identification of each product.



DPI10S 压力变送器  
DPI10S Pressure transmitter

测量范围: -100KPa-1MPa, 0-60MPa  
Measurement range: -100KPa-1MPa, 0-60MPa  
全量程精度: 0.075%F.S, 0.1%F.S, 0.25%F.S, 0.5%F.S  
Accuracy: 0.075%F.S, 0.1%F.S, 0.25%F.S, 0.5%F.S  
输出信号: 4-20mA, 4-20mA+HART, RS485 RTU  
Output signals: 4-20mA, 4-20mA+HART, RS485 RTU  
供电范围: 12.5-36VDC  
Power supply range: 12.5-36VDC  
防护等级: IP66  
Protection grade: IP66  
防爆等级: Ex db II C T6 Gb  
Explosion-proof grade: Ex db II C T6 Gb  
电气接口: M20x1.5 内螺纹  
Electrical interface: M20x1.5 internal thread  
安装接口: M20x1.5, G1/4, G1/2, 1/4NPT, 1/2NPT  
Installation interface: M20x1.5, G1/4, G1/2, 1/4npt, 1/2npt



DPI10D/J 差压高静压变送器  
DPI10D/J Differential pressure high static pressure transmitter

测量范围: 0-2MPa, 0-20MPa (适用 DPI10J)  
Measurement range: 0-2MPa, 0-20MPa (applicable to DPI10J)  
全量程精度: 0.075%F.S, 0.1%F.S, 0.25%F.S, 0.5%F.S  
Accuracy: 0.075%F.S, 0.1%F.S, 0.25%F.S, 0.5%F.S  
输出信号: 4-20mA, 4-20mA+HART  
Output signals: 4-20mA, 4-20mA+HART  
供电范围: 12.5-36VDC  
Power supply range: 12.5-36VDC  
防护等级: IP66  
Protection grade: IP66  
防爆等级: Ex db II C T6 Gb  
Explosion-proof grade: Ex db II C T6 Gb  
电气接口: M20x1.5 内螺纹  
Electrical interface: M20x1.5 internal thread  
安装接口: 本体 1/4NPT, 腰型法兰 1/2NPT  
Installation interface: ontology 1/4npt, lumbar flange 1/2npt



DPI10W 微差压变送器  
DPI10W Micro differential pressure transmitter

测量范围: -7.5KPa-7.5KPa  
Measurement range: -7.5KPa-7.5KPa  
全量程精度: 0.075%F.S, 0.1%F.S, 0.25%F.S, 0.5%F.S  
Accuracy: 0.075%F.S, 0.1%F.S, 0.25%F.S, 0.5%F.S  
输出信号: 4-20mA, 4-20mA+HART  
Output signals: 4-20mA, 4-20mA+HART  
供电范围: 12.5-36VDC  
Power supply range: 12.5-36VDC  
防护等级: IP66  
Protection grade: IP66  
防爆等级: Ex db II C T6 Gb  
Explosion-proof grade: Ex db II C T6 Gb  
电气接口: M20x1.5 内螺纹  
Electrical interface: M20x1.5 internal thread  
安装接口: 本体 1/4NPT, 腰型法兰 1/2NPT  
Installation interface: ontology 1/4npt, lumbar flange 1/2npt



DPI10C/A 压力 / 绝压变送器  
DPI10C/A Pressure/absolute pressure transmitter

测量范围: 0-2MPa, 0-20MPa  
Measurement range: 0-2MPa, 0-20MPa  
全量程精度: 0.075%F.S, 0.1%F.S, 0.25%F.S, 0.5%F.S  
Accuracy: 0.075%F.S, 0.1%F.S, 0.25%F.S, 0.5%F.S  
输出信号: 4-20mA, 4-20mA+HART  
Output signals: 4-20mA, 4-20mA+HART  
供电范围: 12.5-36VDC  
Power supply range: 12.5-36VDC  
防护等级: IP66  
Protection grade: IP66  
防爆等级: Ex db II C T6 Gb  
Explosion-proof grade: Ex db II C T6 Gb  
电气接口: M20x1.5 内螺纹  
Electrical interface: M20x1.5 internal thread  
安装接口: 本体 1/4NPT, 腰型法兰 1/2NPT  
Installation interface: ontology 1/4npt, lumbar flange 1/2npt



DPI10L 隔膜法兰式变送器  
DPI10L Diaphragm flange transmitter

测量范围: 0-40KPa, 0-2000KPa  
Measurement range: 0-40KPa, 0-2000KPa  
全量程精度: 0.25%F.S, 0.5%F.S  
Accuracy: 0.25%F.S, 0.5%F.S  
输出信号: 4-20mA, 4-20mA+HART  
Output signals: 4-20mA, 4-20mA+HART  
供电范围: 12.5-36VDC  
Power supply range: 12.5-36VDC  
防护等级: IP66  
Protection grade: IP66  
防爆等级: Ex db II C T6 Gb  
Explosion-proof grade: Ex db II C T6 Gb  
电气接口: M20x1.5 内螺纹  
Electrical interface: M20x1.5 internal thread  
安装法兰: 根据用户需要标准定制  
Installation flange: Customized according to the user's requirements



DPI10DL/SL 隔膜远传式变送器  
DPI10DL/SL Diaphragm remote transmission transmitter

测量范围: 0-40KPa, 0-2000KPa  
Measurement range: 0-40KPa, 0-2000KPa  
全量程精度: 0.25%F.S, 0.5%F.S  
Accuracy: 0.25%F.S, 0.5%F.S  
输出信号: 4-20mA, 4-20mA+HART  
Output signals: 4-20mA, 4-20mA+HART  
供电范围: 12.5-36VDC  
Power supply range: 12.5-36VDC  
防护等级: IP66  
Protection grade: IP66  
防爆等级: Ex db II C T6 Gb  
Explosion-proof grade: Ex db II C T6 Gb  
电气接口: M20x1.5 内螺纹  
Electrical interface: M20x1.5 internal thread  
安装法兰: 根据用户需要标准定制  
Installation flange: Customized according to the user's requirements



DPI706J 经济型压力变送器  
DPI706J Economical pressure transmitter

测量范围: -100KPa-1MPa, 0-60MPa  
Measurement range: -100KPa-1MPa, 0-60MPa  
全量程精度: 0.5%F.S  
Accuracy: 0.5%F.S  
输出信号: 4-20mA  
Output signals: 4-20mA  
供电范围: 12.5-36VDC  
Power supply range: 12.5-36VDC  
防护等级: IP66  
Protection grade: IP66  
防爆等级: Ex db II C T6 Gb  
Explosion-proof grade: Ex db II C T6 Gb  
电气接口: M20x1.5 内螺纹  
Electrical interface: M20x1.5 internal thread  
安装接口: M20x1.5, G1/4, G1/2, 1/4NPT, 1/2NPT  
Installation interface: M20x1.5, G1/4, G1/2, 1/4npt, 1/2npt



DPI702 压力变送器  
DPI702 Pressure transmitter

测量范围: -100KPa-1MPa, 0-60MPa  
Measurement range: -100KPa-1MPa, 0-60MPa  
全量程精度: 0.1%F.S, 0.25%F.S, 0.5%F.S  
Accuracy: 0.1%F.S, 0.25%F.S, 0.5%F.S  
输出信号: 4-20mA, 4-20mA+HART, RS485 RTU  
Output signals: 4-20mA, 4-20mA+HART, RS485 RTU  
供电范围: 12.5-36VDC  
Power supply range: 12.5-36VDC  
防护等级: IP65  
Protection grade: IP65  
防爆等级: Ex db II C T6 Gb  
Explosion-proof grade: Ex db II C T6 Gb  
电气接口: M12x1 快速连接器  
Electrical interface: M12x1 quick connector  
安装接口: M20x1.5, G1/4, G1/2, 1/4NPT, 1/2NPT  
Installation interface: M20x1.5, G1/4, G1/2, 1/4npt, 1/2npt



DPI701 经济型压力变送器  
DPI701 Economical pressure transmitter

测量范围: -100KPa-1MPa, 0-60MPa  
Measurement range: -100KPa-1MPa, 0-60MPa  
全量程精度: 0.1%F.S, 0.25%F.S, 0.5%F.S  
Accuracy: 0.1%F.S, 0.25%F.S, 0.5%F.S  
输出信号: 4-20mA, 4-20mA+HART  
Output signals: 4-20mA, 4-20mA+HART  
供电范围: 12.5-36VDC  
Power supply range: 12.5-36VDC  
防护等级: IP65  
Protection grade: IP65  
防爆等级: IP65  
电气接口: GDM 接插件  
Electrical interface: GDM connector  
安装接口: M20x1.5, G1/4, G1/2, 1/4NPT, 1/2NPT  
Installation interface: M20x1.5, G1/4, G1/2, 1/4npt, 1/2npt  
可选配液晶显示或数码管显示  
Optional liquid crystal display or digital tube display



DPI41L 压力变送器  
DPI41L Pressure transmitter

测量范围: -100KPa-1MPa, 0-60MPa  
Measurement range: -100KPa-1MPa, 0-60MPa  
全量程精度: 0.25%F.S, 0.5%F.S  
Accuracy: 0.25%F.S, 0.5%F.S  
输出信号: 4-20mA  
Output signals: 4-20mA  
供电范围: 12.5-36VDC  
Power supply range: 12.5-36VDC  
防护等级: IP66  
Protection grade: IP66  
防爆等级: Ex db II C T6 Gb  
Explosion-proof grade: Ex db II C T6 Gb  
电气接口: M20x1.5 内螺纹  
Electrical interface: M20x1.5 internal thread  
安装接口: M20x1.5, G1/4, G1/2, 1/4NPT, 1/2NPT  
Installation interface: M20x1.5, G1/4, G1/2, 1/4npt, 1/2npt



DPI706B 压力变送器  
DPI706B Pressure transmitter

测量范围: -100KPa-1MPa, 0-60MPa  
Measurement range: -100KPa-1MPa, 0-60MPa  
全量程精度: 0.5%F.S  
Accuracy: 0.5%F.S  
输出信号: 4-20mA  
Output signals: 4-20mA  
供电范围: 12.5-36VDC  
Power supply range: 12.5-36VDC  
防护等级: IP65  
Protection grade: IP65  
防爆等级: IP65  
电气接口: M15x1.25 外螺纹  
Explosion-proof grade: Ex db II C T6 Gb  
Electrical interface: M15x1.25 external thread  
安装接口: M20x1.5, G1/4, G1/2, 1/4NPT, 1/2NPT  
Installation interface: M20x1.5, G1/4, G1/2, 1/4npt, 1/2npt



DPI210 压力变送器  
DPI210 Pressure transmitter

测量范围: -100KPa-1MPa, 0-60MPa  
Measurement range: -100KPa-1MPa, 0-60MPa  
全量程精度: 0.5%F.S  
Accuracy: 0.5%F.S  
输出信号: 4-20mA, 0.5-4.5V  
Output signals: 4-20mA, 0.5-4.5V  
供电范围: 12.5-36VDC, 5V  
Power supply range: 12.5-36VDC, 5V  
防护等级: IP65  
Protection grade: IP65  
电气接口: Packard 插头 -3 针  
Electrical interface: Packard plug -3 pins  
安装接口: M20x1.5, G1/4, G1/2, 1/4NPT, 1/2NPT  
Installation interface: M20x1.5, G1/4, G1/2, 1/4npt, 1/2npt  
安装方便, 体积小  
Easy to install and compact in size

## 温度传感器特点/Characteristics of Temperature Sensor

百事得 (ETbaissde) 生产的 WZPK 系列铠装热电阻具有精度高、灵敏度高、热响应快, 质量稳定, 使用寿命长等优点。外保护套采用不锈钢, 管内充满高密度氧化物绝缘体, 具有很强的抗污染性能和优良的机械强度, 适合安装在环境恶劣的场合。

The WZPK series armored thermal resistors produced by baissde (ETbaissde) feature high precision, high sensitivity, fast thermal response, stable quality and long service life. The outer protective sleeve is made of stainless steel, and the inner tube is filled with high-density oxide insulator, which has strong anti-pollution performance and excellent mechanical strength, making it suitable for installation in harsh environments.

**WZPK-10S 温度变送器**  
WZPK-10S Temperature transmitter



测量范围: -70~300°C  
Measurement range: -70-300°C  
精度等级: A 级 ±0.15 B 级 ±0.3  
Accuracy grade: A grade ±0.15, B grade ±0.3  
输出信号: 4-20mA, 4-20mA+HART, RS485 RTU  
Output signals: 4-20mA, 4-20mA+HART, RS485 RTU  
供电范围: 12.5-36VDC  
Power supply range: 12.5-36VDC  
防护等级: IP66  
Protection grade: IP66  
防爆等级: Ex db II C T6 Gb  
Explosion-proof grade: Ex db II C T6 Gb  
电气接口: M20x1.5 内螺纹  
Electrical interface: M20x1.5 internal thread  
安装接口: 可根据需要定制  
Installation interface: Customization is available as needed

**WZPK-706J 经济型温度变送器**  
WZPK-706J Economical temperature transmitter



测量范围: -70~300°C  
Measurement range: -70-300°C  
精度等级: A 级 ±0.15 B 级 ±0.3  
Accuracy grade: A grade ±0.15, B grade ±0.3  
输出信号: 4-20mA  
Output signals: 4-20mA  
供电范围: 12.5-36VDC  
Power supply range: 12.5-36VDC  
防护等级: IP66  
Protection grade: IP66  
防爆等级: Ex db II C T6 Gb  
Explosion-proof grade: Ex db II C T6 Gb  
电气接口: M20x1.5 内螺纹  
Electrical interface: M20x1.5 internal thread  
安装接口: 可根据需要定制  
Installation interface: Customization is available as needed

**WZPK-701 经济型温度变送器**  
WZPK-701 Economical temperature transmitter



测量范围: -70~300°C  
Measurement range: -70-300°C  
精度等级: A 级 ±0.15 B 级 ±0.3  
Accuracy grade: A grade ±0.15, B grade ±0.3  
输出信号: 4-20mA, PT100  
Output signals: 4-20mA, PT100  
供电范围: 12.5-36VDC  
Power supply range: 12.5-36VDC  
防护等级: IP65  
Protection grade: IP65  
电气接口: GDM 接插件  
Electrical interface: GDM connector  
安装接口: 可根据需要定制  
Installation interface: Customization is available as needed  
精小型, 适合狭小空间安装  
Compact and compact, suitable for installation in narrow Spaces

**WZPK-T/E 温度传感器 / 变送器**  
WZPK-T/E Temperature sensor/transmitter



测量范围: -70~300°C  
Measurement range: -70-300°C  
精度等级: A 级 ±0.15 B 级 ±0.3  
Accuracy grade: A grade ±0.15, B grade ±0.3  
输出信号: 4-20mA, PT100  
Output signals: 4-20mA, PT100  
供电范围: 12.5-36VDC  
Power supply range: 12.5-36VDC  
防护等级: IP66  
Protection grade: IP66  
防爆等级: Ex db II C T6 Gb  
Explosion-proof grade: Ex db II C T6 Gb  
电气接口: M20x1.5 内螺纹  
Electrical interface: M20x1.5 internal thread  
安装接口: 可根据需要定制  
Installation interface: Customization is available as needed

**WZPK-706B 经济性温度变送器**  
WZPK-706B Economical temperature transmitter



测量范围: -70~300°C  
Measurement range: -70-300°C  
精度等级: A 级 ±0.15 B 级 ±0.3  
Accuracy grade: A grade ±0.15, B grade ±0.3  
输出信号: 4-20mA, PT100  
Output signals: 4-20mA, PT100  
供电范围: 12.5-36VDC  
Power supply range: 12.5-36VDC  
防护等级: IP65  
Protection grade: IP65  
防爆等级: Ex db II C T6 Gb  
Explosion-proof grade: Ex db II C T6 Gb  
电气接口: M15x1.25 外螺纹  
Electrical interface: M15x1.25 external thread  
安装接口: 可根据需要定制  
Installation interface: Customization is available as needed



## 数字压力、温度表/Digital pressure /temperature gauge

百事得 (ETbaissde) 专为客户开发出无法布线, 抗耐振、测量精度高、超长使用寿命的数字压力表和温度表, 该压力 / 温度表性能可靠, 测量稳定, 可长期用于管道振动, 脉冲压力频繁区域测量, 极大地降低维护成本。

Baissde (ETbaissde) has specially developed digital pressure gauges and thermometers for customers that do not require wiring, are shock-resistant, have high measurement accuracy, and an extremely long service life.

These pressure/temperature gauges are reliable in performance, stable in measurement, and can be used for long-term measurement in areas with frequent pipeline vibration and pulse pressure, greatly reducing maintenance costs.

**DPI600/601 数字压力表**  
DPI600/601 Digital pressure gauge



测量范围: -100KPa-1MPa, 0-60MPa  
Measurement range: -100KPa-1MPa, 0-60MPa  
全量程精度: 0.25%F.S, 0.5%F.S  
Accuracy: 0.25%F.S, 0.5%F.S  
供电类型: 9V 电池供电  
Power supply type: 9V battery power supply  
防护等级: IP64  
Protection grade: IP64  
安装接口: 由客户指定  
Installation interface: Designated by the customer

**DPI600W/601W 数字温度表**  
DPI600W/601W Digital thermometer



测量范围: -70~300°C  
Measurement range: -70-300°C  
精度等级: A 级 ±0.15 B 级 ±0.3  
Accuracy grade: A grade ±0.15, B grade ±0.3  
供电类型: 9V 电池供电  
Power supply type: 9V battery power supply  
防护等级: IP64  
Protection grade: IP64  
安装接口: 由客户指定  
Installation interface: Designated by the customer

**DPI600S/601S 数字压力表**  
DPI600S/601S Digital pressure gauge



测量范围: -100KPa-1MPa, 0-60MPa  
Measurement range: -100KPa-1MPa, 0-60MPa  
全量程精度: 0.25%F.S, 0.5%F.S  
Accuracy: 0.25%F.S, 0.5%F.S  
供电类型: 3.6V 电池供电  
Power supply type: 3.6V battery power supply  
防护等级: IP66  
Protection grade: IP66  
安装接口: 由客户指定  
Installation interface: Designated by the customer

**DPI600SW/601SW 数字温度表**  
DPI600SW/601SW Digital thermometer



测量范围: -70~300°C  
Measurement range: -70-300°C  
精度等级: A 级 ±0.15 B 级 ±0.3  
Accuracy grade: A grade ±0.15, B grade ±0.3  
供电类型: 3.6V 电池供电  
Power supply type: 9V battery power supply  
防护等级: IP66  
Protection grade: IP66  
安装接口: 由客户指定  
Installation interface: Designated by the customer

## 物位开关/Level switch

百事得 (ETbaissde) 生产的 DPI50 物位开关应用性广, 可检测固体液体浆料, 不受泡沫影响, 可有效检测粘附性导电浆料。物位开关结构紧凑, 适合狭小空间安装, 且使用方便, 可手持式通信器设定报警点机查看过程变量值。接液材料为 PEEK 和不锈钢。

The DPI50 level switch produced by baissde (ETbaissde) has a wide range of applications. It can detect solid and liquid slurries, is not affected by foam, and can effectively detect adhesive conductive slurries. The level switch has a compact structure, is suitable for installation in narrow spaces, and is easy to use. It can be set with a handheld communicator to set alarm points and view process variable values. The liquid-contact materials are PEEK and stainless steel.



### DPI50 物位开关 /DPI50 Level switch

过程温度: -40~115℃  
过程压力: -0.1~10MPa  
输出信号: PNP 或 NPN  
供电范围: 12.5~36VDC  
防护等级: IP65  
接液材质: PEEK  
电气接口: M12x1 快速连接器  
安装接口: G1/2 螺纹标准型、φ50.5 卡箍式

Process temperature: -40-115°C  
Process pressure: -0.1-10MPa  
Output signal: PNP or NPN  
Power supply range: 12.5-36VDC  
Protection grade: IP65  
Liquid-contact material: PEEK  
Electrical interface: M12x1 quick connector  
Installation interface: G1/2 thread standard type, φ50.5 clamp type

## 压力、温度开关/Pressure and temperature switches

百事得 (ETbaissde) DPI700 系列压力 / 温度开关设计用于液体及气体介质的压力 / 温度监测, 适用于机械 制造、机床系统、液压及气动系统、压力 / 温度监控、泵及压缩机等一般工业领域。该产品集压力 / 温度开关、变送器与显示于一体。它标配两路开关输出 (PNP 或 NPN)、1 路模拟输出信号 (0~20mA/4~20mA 或 0~5V/0~10V) 以及 1 路 RS485 接口。

Baissde (ETbaissde) DPI700 series pressure/temperature switches are designed for pressure/temperature monitoring of liquid and gas media and are suitable for general industrial fields such as mechanical manufacturing, machine tool systems, hydraulic and pneumatic systems, pressure/temperature monitoring, pumps and compressors. This product integrates a pressure/temperature switch, a transmitter and a display. It is standard-equipped with two switch output channels (PNP or NPN), one analog output signal channel (0-20mA/4-20mA or 0-5V/0-10V), and one RS485 interface.



### DPI700-G/A 压力开关 /DPI700-G/A Pressure switch

测量范围: -0.1~1MPa, 0~60MPa  
精度: 0.5%F.S  
模拟输出: 4~20mA, 0~5V, 0~10V  
开关量输出: PNP 或 NPN  
供电范围: 12.5~36VDC  
防护等级: IP65  
电气接口: M12x1 快速连接器  
安装接口: 由客户指定

Measurement range: -0.1-1MPa, 0-60MPa  
Precision: 0.5%F.S  
Analog output: 4-20mA, 0-5V, 0-10V  
Switch output: PNP or NPN  
Power supply range: 12.5-36VDC  
Protection grade: IP65  
Electrical interface: M12x1 quick connector  
Installation interface: Specified by the customer



### DPI700-W 温度开关 /DPI700-W Temperature switch

测量范围: -70~300℃  
精度: 0.5%F.S  
模拟输出: 4~20mA  
开关量输出: PNP 或 NPN  
供电范围: 12.5~36VDC  
防护等级: IP65  
电气接口: M12x1 快速连接器  
安装接口: 由客户指定

Measurement range: -70-300°C  
Precision: 0.5%F.S  
Analog output: 4-20mA  
Switch output: PNP or NPN  
Power supply range: 12.5-36VDC  
Protection grade: IP65  
Electrical interface: M12x1 quick connector  
Installation interface: Specified by the customer

## DPI10Y/T/F 液位变送器/DPI10Y/T/F level transmitter

百事得 (ETbaissde) DPI10Y/T/F 液位变送器适用于制药、化工、石油、炼油、火电、焦化、钢铁、冶金、化肥、污水处理、造纸、汽机、供热中心、自来水管网、纺织、纯水处理等行业的液位测量。此系列液位变送器具有抗射频干扰能力强, 稳定性好, 响应时间快, 温度影响小等特点。量程单位为 mmH<sub>2</sub>O 或 mH<sub>2</sub>O。

Baissde (ETbaissde) DPI10Y/T/F liquid level transmitter is suitable for liquid level measurement in industries such as pharmaceuticals, chemicals, petroleum, oil refining, thermal power, coking, steel, metallurgy, fertilizers, sewage treatment, papermaking, turbines, heating centers, water supply networks, textiles, and pure water treatment. This series of liquid level transmitters feature strong resistance to radio frequency interference, good stability, fast response time, and minimal influence by temperature. The range unit is mmH<sub>2</sub>O or mH<sub>2</sub>O.



### DPI10T 探杆式液位变送器 /DPI10T Probe type liquid level transmitter

测量范围: 0~10mH<sub>2</sub>O  
全量程精度: 0.1%F.S, 0.25%F.S, 0.5%F.S  
输出信号: 4~20mA, RS485 RTU  
供电范围: 12.5~36VDC  
防护等级: IP66  
防爆等级: Ex db II C T6 Gb  
电气接口: M20x1.5 内螺纹  
安装接口: 由客户指定

Measurement range: 0-10mH<sub>2</sub>O  
Full-range accuracy: 0.1%F.S, 0.25%F.S, 0.5%F.S  
Output signal: 4-20mA, RS485 RTU  
Power supply range: 12.5-36VDC  
Protection grade: IP66  
Explosion-proof grade: Ex db II C T6 Gb  
Electrical interface: M20x1.5 internal thread  
Installation interface: Specified by the customer



### DPI10F 分体式液位变送器 /DPI10F Split-type level transmitter

测量范围: 0~10mH<sub>2</sub>O  
全量程精度: 0.1%F.S, 0.25%F.S, 0.5%F.S  
输出信号: 4~20mA, RS485 RTU  
供电范围: 12.5~36VDC  
防护等级: IP66  
防爆等级: Ex db II C T6 Gb  
电气接口: M20x1.5 内螺纹  
安装接口: 由客户指定

Measurement range: 0-10mH<sub>2</sub>O  
Full-range accuracy: 0.1%F.S, 0.25%F.S, 0.5%F.S  
Output signal: 4-20mA, RS485 RTU  
Power supply range: 12.5-36VDC  
Protection grade: IP66  
Explosion-proof grade: Ex db II C T6 Gb  
Electrical interface: M20x1.5 internal thread  
Installation interface: Specified by the customer



### DPI10Y 一体化投入式液位变送器 DPI10Y Integrated submersible level transmitter

测量范围: 0~10mH<sub>2</sub>O  
精度: 0.5%F.S  
输出信号: 4~20mA  
供电范围: 12.5~36VDC  
防护等级: IP66  
电气接口: 一体出线

Measurement range: 0-10mH<sub>2</sub>O  
Precision: 0.5%F.S  
Output signal: 4-20mA  
Power supply range: 12.5-36VDC  
Protection grade: IP66  
Electrical interface: Integrated outgoing line

## 全方位雷达液位计/All-round radar level gauge

百事得 (ETbaissde) 技术研发的 26G 高频雷达式物位测量仪表, 测量最大距离可达 80 米。天线被进一步优化处理, 比传统雷达液、物位计反射盲区减小, 新型快速的微处理器可以进行更高速率的信号分析处理, 使得仪表可以用于反应釜、固体料仓等一些复杂的测量条件。

The 26G high-frequency radar level measurement instrument developed by Baissde (ETbaissde) Technology has a maximum measurement distance of up to 80 meters. The antenna has been further optimized, reducing the reflection blind zone compared to traditional radar liquid and level gauges. The new fast microprocessor can perform higher-rate signal analysis and processing, enabling the instrument to be used in some complex measurement conditions such as reaction vessels and solid material silos.



### DPI-LD 雷达液位计 /DPI-LD Radar level gaugeswitch

测量范围: 0.3m-60m (固体)、0.08m-30m (液体)、0.6m-120m (固体)	Measurement range: 0.3m-60m (solid), 0.08m-30m (liquid), 0.6m-120m (solid)
精度: ±0.7mm	Precision: ±0.7mm
输出信号: 4-20mA, 4-20mA+HART, RS485 RTU	Output signals: 4-20mA, 4-20mA+HART, RS485 RTU
供电范围: 12.5-36VDC	Power supply range: 12.5-36VDC
防护等级: IP66	Protection grade: IP66
防爆等级: Ex db II C T6 Gb	Explosion-proof grade: Ex db II C T6 Gb
电气接口: M20x1.5 内螺纹	Electrical interface: M20x1.5 internal thread
安装接口: 由客户指定	Installation interface: Specified by the customer

功能特点: 天线尺寸小, 便于安装; 非接触雷达, 无磨损, 无污染。几乎不受腐蚀、泡沫影响; 几乎不受大气中水蒸气、温度和压力变化影响。严重粉尘环境对高频物位计工作影响不大。波长更短, 对在倾斜的固体表面有更好的反射。波束角小, 能量集中, 增强了回波能力的同时又有利于避开干扰物。测量盲区更小, 对于小罐测量也会取得良好的效果。高信噪比, 即使在波动的情况下也能获得更优的性能。高频率, 是测量固体和低介电常数介质的最佳选择。

Functional features: Small antenna size, easy to install; Non-contact radar, no wear and no pollution. It is almost unaffected by corrosion and foam. It is almost unaffected by changes in water vapor, temperature and pressure in the atmosphere. Severe dust environments have little impact on the operation of high-frequency level gauges. It has a shorter wavelength and better reflection on inclined solid surfaces. The small beam Angle and concentrated energy not only enhance the echo capability but also facilitate avoiding interfering objects. The measurement blind zone is smaller, and good results can also be achieved for the measurement of small tanks. High signal-to-noise ratio ensures superior performance even under fluctuating conditions. High frequency is the best choice for measuring solids and media with low dielectric constants.

## 工业型产品细节照片/Detailed photos of industrial products



隔膜法兰平膜片  
Flange flat diaphragm



独立的接线端子  
Independent terminal blocks



方便观察的本体显示  
Ontology display

## 数显控制仪表/Digital display control instrument

百事得 (ETbaissde) DPI800 系列数显控制仪表可将在线电子式温度计、液位变送器、压力变送器给出的模拟信号转换为数字显示, 让使用者直接读取在线仪表所测量的物理量变化, DPI800 数显控制仪可输入万能信号, 输出一个 4-20mA 标准信号, 2 位报警点可任意设置, 2 点 3A 继电器开关输出可简单实现温度、液位、压力控制。

Baissde (ETbaissde) DPI800 series digital display control instrument can convert the analog signals provided by online electronic thermometers, liquid level transmitters, and pressure transmitters into digital displays, allowing users to directly read the changes in physical quantities measured by the online instruments. The DPI800 digital display control instrument can input universal signals Output a 4-20mA standard signal. The 2-digit alarm points can be set arbitrarily. The 2-point 3A relay switch output can simply achieve temperature, liquid level and pressure control.



### DPI800A

供电: 220VDC  
输入: 万能信号  
输出: 4-20mA  
外形尺寸: 96Wx96Hx76L  
开孔尺寸: 92x92

Power supply: 220VDC  
Input: Universal signal  
Output: 4-20mA  
Dimensions: 96Wx96Hx76L  
Opening size: 92x92



### DPI800B

供电: 220VDC  
输入: 万能信号  
输出: 4-20mA  
外形尺寸: 96Wx48Hx82L  
开孔尺寸: 92x45

Power supply: 220VDC  
Input: Universal signal  
Output: 4-20mA  
Dimensions: 96Wx48Hx82L  
Opening size: 92x45

## 工业型产品细节照片/Detailed photos of industrial products



明确的产品标识  
Clear product identification



不锈钢温度探杆  
Stainless steel temperature probe



安装接口  
Installation interface

## 表面质量/Surface quality

百事得 (ETbaissde) DPI 系列卫生型压力、液位变送器在设计过程中全面考虑在清洁用于 CIP/SIP (原位清洁和原位灭菌) 的设备时, 表面结构设计采用平面隔膜密封, 确保过程连接中无死区, 在整体设备清洁和灭菌时能轻松方便的完成对测量仪表的清洁, 平面隔膜密封设计根据 EHEDG 规范第 8 号文件“卫生型设备设计准则”中一类卫生标准的要求, 测量端无死区, 表面光洁度  $Ra < 0.4\mu m$  才能满足清洁过程的要求。

Baissde (ETbaissde) DPI series of sanitary pressure and level transmitters are designed with comprehensive consideration for cleaning equipment used in CIP/SIP (in-situ cleaning and in-situ sterilization). The surface structure design adopts a flat diaphragm seal to ensure no dead zones during the process connection. When cleaning and sterilizing the entire equipment, the cleaning of measuring instruments can be easily and conveniently completed. The flat diaphragm seal design complies with the requirements of Class I hygiene standards in EHEDG Specification Document No. 8, "Design Guidelines for Sanitary Equipment". There should be no dead zones at the measuring end, and the surface finish Ra should be less than  $0.4\mu m$  to meet the requirements of the cleaning process.

## 材料要求/Material requirements

百事得 (ETbaissde) DPI 系列卫生型压力、液位变送器对食品、饮料啤酒、发酵、葡萄酒、乳制品行业及制药工业在线测量仪表设计过程, 奥氏体不锈钢 1.4404 和 1.4435 是首选材料, 奥氏体不锈钢不会和绝大多数的食品、药品发生化学反应, 还具有良好的抗消毒液和清洁剂腐蚀性性能。

Baissde (ETbaissde) DPI series of sanitary pressure and level transmitters are the preferred materials for the design process of online measurement instruments in the food, beverage, beer, fermentation, wine, dairy, and pharmaceutical industries. Austenitic stainless steel 1.4404 and 1.4435 do not undergo chemical reactions with the vast majority of food and pharmaceuticals. It also has excellent resistance to the corrosion of disinfectants and cleaning agents.

## 应用行业/Application industry

食品、饮料、啤酒, 发酵、酿酒、葡萄酒、乳制品  
Food, beverages, beer, fermentation, brewing, wine, dairy products



# 卫生型设计在线仪表

## Hygienic design online instrument

随着生产安全性和清洁性要求的不断提高, 人们对于测量仪表的质量要求也在不断提升。百事得 (ETbaissde) DPI 系列测量仪表的材料, 结构设计, 表面处理质量, 完全满足卫生型应用的严格要求, 用于测量压力、液位流体的 sensor 能让客户轻松的取得 FDA 认证。

With the continuous improvement of production safety and cleanliness requirements, people's quality demands for measuring instruments are also constantly rising. The materials, structural design and surface treatment quality of ETbaissde's DPI series measuring instruments fully meet the strict requirements of hygienic applications. The sensors used for measuring pressure and liquid level fluids enable customers to easily obtain FDA certification.



## 结构设计要求/Structural design requirements

百事得 (ETbaissde) DPI 系列卫生型隔膜密封压力、液位变送器在结构设计过程中首先考虑过程连接的隔膜密封系统, 特别适用于卫生型应用中的压力、液位测量。DPI40 型无菌卡盘式隔膜密封通过 EHEDG (欧洲卫生工程与设计组织) 的测试, 非常适合卫生型应用。

DPI40 型无菌卡盘式隔膜密封的安装和拆卸操作都非常简单, 通过特殊的焊接套管可以实现与容器和管路的冲洗密封, 可以为用户提供易于清洁的压力测量点, 适合 CIP (原位清洁) 和 SIP (原位灭菌) 应用, 高温型可到 150℃ 不需要散热装置。

Baissde (ETbaissde) DPI series of sanitary diaphragm sealed pressure and level transmitters, in the structural design process, first considers the diaphragm sealing system for process connection, which is particularly suitable for pressure and level measurement in sanitary applications. The DPI40 aseptic chuck diaphragm seal has passed the test of EHEDG (European Sanitary Engineering and Design Organization) and is highly suitable for sanitary applications. The installation and disassembly of the DPI40 type sterile chuck diaphragm seal are both very simple. Through a special welded sleeve, it can achieve flushing sealing with containers and pipelines, providing users with an easy-to-clean pressure measurement point. It is suitable for CIP (in-situ cleaning) and SIP (in-situ sterilization) applications, and the high-temperature type can reach 150°C without the need for a heat dissipation device.

### DPI41S 卫生型隔膜密封高温液位压力变送器 DPI41S Sanitary diaphragm sealed high-temperature liquid level pressure transmitter



测量范围: -100KPa-600KPa, 0-6MPa  
Measurement range: -100KPa-600KPa, 0-6MPa  
全量程精度: 0.25%F.S.、0.5%F.S.  
Accuracy: 0.25%F.S, 0.5%F.S  
输出信号: 4-20mA、4-20mA+HART、RS485 RTU  
Output signals: 4-20mA, 4-20mA+HART, RS485 RTU  
供电范围: 12.5-36VDC  
Power supply range: 12.5-36VDC  
防护等级: IP67  
Protection grade: IP67  
防爆等级: Ex db II C T6 Gb  
Explosion-proof grade: Ex db II C T6 Gb  
电气接口: M12x1 快速连接器  
Electrical interface: M12x1 quick connector  
安装接口:  $\phi$ 50.5 卡箍  
Installation interface:  $\phi$ 50.5 clamp

### DPI40SL 全不锈钢外壳压力变送器 DPI40SL All-stainless steel housing pressure transmitter



测量范围: -100KPa-1MPa, 0-60MPa  
Measurement range: -100KPa-1MPa, 0-60MPa  
全量程精度: 0.25%F.S.、0.5%F.S.  
Accuracy: 0.25%F.S, 0.5%F.S  
输出信号: 4-20mA、4-20mA+HART、RS485 RTU  
Output signals: 4-20mA, 4-20mA+HART, RS485 RTU  
供电范围: 12.5-36VDC  
Power supply range: 12.5-36VDC  
防护等级: IP67  
Protection grade: IP67  
防爆等级: Ex db II C T6 Gb  
Explosion-proof grade: Ex db II C T6 Gb  
电气接口: M12x1 快速连接器  
Electrical interface: M12x1 quick connector  
安装接口: M20x1.5, G1/4, G1/2, 1/4NPT, 1/2NPT  
Installation interface: M20x1.5, G1/4, G1/2, 1/4NPT, 1/2NPT

### DPI40H 隔膜密封活接头压力液位变送器 DPI40H Diaphragm sealed union pressure-level transmitter



测量范围: -100KPa-7MPa  
Measurement range: -100KPa-7MPa  
全量程精度: 0.25%F.S.、0.5%F.S.  
Accuracy: 0.25%F.S, 0.5%F.S  
输出信号: 4-20mA、4-20mA+HART、RS485 RTU  
Output signals: 4-20mA, 4-20mA+HART, RS485 RTU  
供电范围: 12.5-36VDC  
Power supply range: 12.5-36VDC  
防护等级: IP67  
Protection grade: IP67  
防爆等级: Ex db II C T6 Gb  
Explosion-proof grade: Ex db II C T6 Gb  
电气接口: M12x1 快速连接器  
Electrical interface: M12x1 quick connector  
安装接口: SMS 标准 38 RD60X1/6  
Installation interface: SMS standard 38 RD60X1/6

### DPI40Z 卫生隔膜密封液位压力变送器 DPI40Z Sanitary diaphragm sealed liquid level pressure transmitter



测量范围: -100KPa-600KPa, 0-6MPa  
Measurement range: -100KPa-600KPa, 0-6MPa  
全量程精度: 0.25%F.S.、0.5%F.S.  
Accuracy: 0.25%F.S, 0.5%F.S  
输出信号: 4-20mA、4-20mA+HART、RS485 RTU  
Output signals: 4-20mA, 4-20mA+HART, RS485 RTU  
供电范围: 12.5-36VDC  
Power supply range: 12.5-36VDC  
防护等级: IP67  
Protection grade: IP67  
防爆等级: Ex db II C T6 Gb  
Explosion-proof grade: Ex db II C T6 Gb  
电气接口: M12x1 快速连接器  
Electrical interface: M12x1 quick connector  
安装接口:  $\phi$ 50.5 卡箍  
Installation interface:  $\phi$ 50.5 clamp

### DPI40S 卫生型隔膜密封液位压力变送器 DPI40S Sanitary diaphragm sealed liquid level pressure transmitter

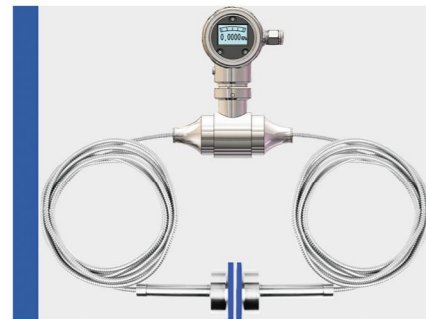


测量范围: -100KPa-600KPa, 0-6MPa  
Measurement range: -100KPa-600KPa, 0-6MPa  
全量程精度: 0.25%F.S.、0.5%F.S.  
Accuracy: 0.25%F.S, 0.5%F.S  
输出信号: 4-20mA、4-20mA+HART、RS485 RTU  
Output signals: 4-20mA, 4-20mA+HART, RS485 RTU  
供电范围: 12.5-36VDC  
Power supply range: 12.5-36VDC  
防护等级: IP67  
Protection grade: IP67  
电气接口: M12x1 快速连接器  
Electrical interface: M12x1 quick connector  
安装接口:  $\phi$ 50.5 卡箍  
Installation interface:  $\phi$ 50.5 clamp  
精小型, 适合狭小空间安装  
Compact and compact, suitable for installation in narrow Spaces

### DPI40X 卫生隔膜密封液位压力变送器 DPI40X Sanitary diaphragm sealed liquid level pressure transmitter



测量范围: -100KPa-600KPa, 0-6MPa  
Measurement range: -100KPa-600KPa, 0-6MPa  
全量程精度: 0.25%F.S.、0.5%F.S.  
Accuracy: 0.25%F.S, 0.5%F.S  
输出信号: 4-20mA、4-20mA+HART、RS485 RTU  
Output signals: 4-20mA, 4-20mA+HART, RS485 RTU  
供电范围: 12.5-36VDC  
Power supply range: 12.5-36VDC  
防护等级: IP67  
Protection grade: IP67  
电气接口: M12x1 快速连接器  
Electrical interface: M12x1 quick connector  
安装接口:  $\phi$ 50.5 卡箍  
Installation interface:  $\phi$ 50.5 clamp  
精小型, 适合狭小空间安装  
Compact and compact, suitable for installation in narrow Spaces



### DPI40SS /SD 卫生型远传式变送器 DPI40SS /SD Sanitary remote transmission transmitter

测量范围: 0-40KPa, 0-2000KPa  
Full-range accuracy: 0.25%F.S, 0.5%F.S  
输出信号: 4-20mA、4-20mA+HART  
Power supply range: 12.5-36VDC  
防护等级: IP67  
Explosion-proof grade: Ex db II C T6 Gb  
Electrical interface: M15x1.25 外螺纹  
Installation interface:  $\phi$ 64 卡箍

Measurement range: 0-40KPa, 0-2000KPa  
Full-range accuracy: 0.25%F.S, 0.5%F.S  
Output signals: 4-20mA, 4-20mA+HART  
Power supply range: 12.5-36VDC  
Protection grade: IP67  
Explosion-proof grade: Ex db II C T6 Gb  
Electrical interface: M15x1.25 external thread  
Installation interface:  $\phi$ 64 clamp



### DPI41 卫生型液位压力变送器 DPI41 Sanitary level pressure transmitter

测量范围: -100KPa-600KPa, 0-6MPa  
Full-range accuracy: 0.25%F.S, 0.5%F.S  
输出信号: 4-20mA  
Power supply range: 12.5-36VDC  
防护等级: IP66  
Explosion-proof grade: Ex db II C T6 Gb  
Electrical interface: M20x1.5 内螺纹  
Installation interface:  $\phi$ 50.5 卡箍

Measurement range: -100KPa-600KPa, 0-6MPa  
Full-range accuracy: 0.25%F.S, 0.5%F.S  
Output signals: 4-20mA  
Power supply range: 12.5-36VDC  
Protection grade: IP66  
Explosion-proof grade: Ex db II C T6 Gb  
Electrical interface: M20x1.5 internal thread  
Installation interface:  $\phi$ 64 clamp

## 卫生型产品细节照片/Detailed photos of hygienic products



符合卫生标准的平膜片  
Health diaphragm



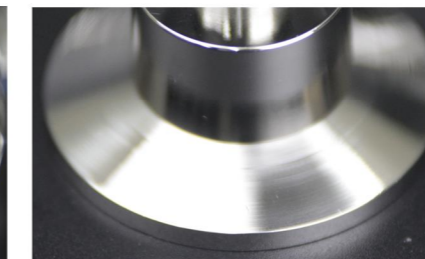
电抛光镜面  
Electropolishing mirror



全不锈钢壳体  
All-stainless steel shell



方便观察的本体显示  
Sight glass



耐高温 150℃ 无散热片  
Technology patent

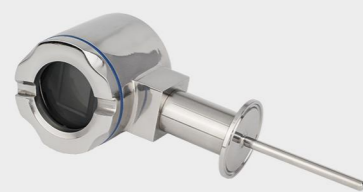


IP67 航插 /IP67 aviation plug

## 卫生型温度传感器/Sanitary temperature sensor

百事得 (ETbaissde) WZPK 系列卫生型温度传感器可满足各种温度测量需求, WZPK 系列卫生型温度传感器采用紧凑型设计, 可快速进行电气连接, 防护等级 IP67 等级, 并且可选择标准信号输出。WZPK 系列卫生型温度传感器采用一体化铠装设计, 在安装和检验过程中不需要打开壳体, 产品符合 3A 卫生标准要求, 适用于各种卫生应用。

Baissde (ETbaissde) WZPK series of sanitary temperature sensors can meet various temperature measurement requirements. The WZPK series of sanitary temperature sensors feature a compact design, allowing for quick electrical connection. They have an IP67 protection rating and can be equipped with standard signal output options. The WZPK series of sanitary temperature sensors adopt an integrated armored design. During installation and inspection, the housing does not need to be opened. The product complies with the 3A sanitary standard requirements and is suitable for various sanitary applications.



### WZPK-S 卫生型温度变送器 WZPK-S Sanitary temperature transmitter

测量范围: -70~300°C  
精度等级: A 级 ±0.15 B 级 ±0.3  
输出信号: 4-20mA、4-20mA+HART  
供电范围: 12.5-36VDC  
防护等级: IP67  
防爆等级: Ex db II C T6 Gb  
电气接口: M12x1 快速连接器  
安装接口: φ50.5 卡箍

Measurement range: -70-300°C  
Accuracy grade: A grade ±0.15, B grade ±0.3  
Output signals: 4-20mA, 4-20mA+HART  
Power supply range: 12.5-36VDC  
Protection grade: IP67  
Explosion-proof grade: Ex db II C T6 Gb  
Electrical interface: M12x1 quick connector  
Installation interface: φ50.5 clamp



### WZPK-L/X 卫生型温度传感器 / 变送器 WZPK-L/X Sanitary temperature sensor/transmitter

测量范围: -70~300°C  
精度等级: A 级 ±0.15 B 级 ±0.3  
输出信号: 4-20mA、PT100  
供电范围: 12.5-36VDC  
防护等级: IP67  
防爆等级: Ex db II C T6 Gb  
电气接口: M12x1 快速连接器  
安装接口: φ50.5、φ25.4 卡箍

Measurement range: -70-300°C  
Accuracy grade: A grade ±0.15, B grade ±0.3  
Output signals: 4-20mA, PT100  
Power supply range: 12.5-36VDC  
Protection grade: IP67  
Explosion-proof grade: Ex db II C T6 Gb  
Electrical interface: M12x1 quick connector  
Installation interface: φ50.5, φ25.4 clamp



### WZPK-V 卫生型温度变送器 WZPK-V Sanitary temperature transmitter

测量范围: -70~300°C  
精度等级: A 级 ±0.15 B 级 ±0.3  
输出信号: 4-20mA、4-20mA+HART  
供电范围: 12.5-36VDC  
防护等级: IP67  
电气接口: M12x1 快速连接器  
安装接口: φ50.5 卡箍  
精小型, 适合狭小空间安装

Measurement range: -70-300°C  
Accuracy grade: A grade ±0.15, B grade ±0.3  
Output signals: 4-20mA, 4-20mA+HART  
Power supply range: 12.5-36VDC  
Protection grade: IP67  
Electrical interface: M12x1 quick connector  
Installation interface: φ50.5 clamp  
Compact and compact, suitable for installation in narrow Spaces



### WZPK-C/B 卫生型温度传感器 / 变送器 WZPK-C/B Sanitary temperature sensor/transmitter

测量范围: -70~300°C  
精度等级: A 级 ±0.15 B 级 ±0.3  
输出信号: 4-20mA、PT100  
供电范围: 12.5-36VDC  
防护等级: IP67  
电气接口: M12x1 快速连接器  
安装接口: φ50.5、φ25.4 卡箍  
精小型, 适合狭小空间安装

Measurement range: -70-300°C  
Accuracy grade: A grade ±0.15, B grade ±0.3  
Output signals: 4-20mA, PT100  
Power supply range: 12.5-36VDC  
Protection grade: IP67  
Electrical interface: M12x1 quick connector  
Installation interface: φ50.5, φ25.4 clamp  
Compact and compact, suitable for installation in narrow Spaces

## ■ 咨询与培训/Consultation and Training

百事得 (ETbaissde) 拥有丰富的仪表专业知识, 积累了大量的现场应用经验, 我们可根据您的需求为您提供最佳仪表解决方案, 我们可以用我们的专业知识给您做更详细的专业培训。

Baissde (ETbaissde) has extensive professional knowledge in instrumentation and has accumulated a wealth of on-site application experience. We can provide you with the best instrumentation solutions based on your needs. We can also offer you more detailed professional training with our expertise.



## ■ 售后服务/After-sales service

百事得 (ETbaissde) 拥有专业的售后服务团队, 开通 24 小时服务热线, 便于解决客户反应的产品问题。严格遵守“一切追求高质量, 用户满意为宗旨”的精神, 公司要求员工定期回访客户产品使用情况, 并听取用户反映的问题及建议, 不断完善产品的功能和品质。

Baissde (ETbaissde) has a professional after-sales service team and a 24-hour service hotline to facilitate the resolution of product issues reported by customers. Adhering strictly to the spirit of "pursuing high quality in everything and taking customer satisfaction as the goal", the company requires its employees to regularly visit customers to check on the usage of the products, listen to the problems and suggestions reflected by users, and constantly improve the functions and quality of the products.



## ■ 快速响应/Quick response

高效的执行力是客户选择百事得的又一大原因, 百事得 (ETbaissde) 之所以能立足于行业顶尖, 对于客户反应的问题, 确保 24 小时之内快速解决问题。

Efficient execution is another major reason why customers choose Baissde. The reason why baissde (ETbaissde) can stand at the top of the industry is that it ensures that the problems reported by customers are solved quickly within 24 hours.



## ■ 降低成本/Reduce costs

百事得 (ETbaissde) 拥有多项产品发明专利, 具有针对性的解决客户在仪表使用方面所面对的棘手问题。彻底解决客户单纯依赖进口产品、成本增加、售后服务响应慢等问题, 超长时间的质保期为客户整体系统良好的运行保驾护航。

Baissde (ETbaissde) holds multiple product invention patents and specifically addresses the difficult problems customers encounter in the use of instruments. Completely solve the problems of customers' sole reliance on imported products, increased costs, and slow response to after-sales service. The extremely long warranty period ensures the smooth operation of the customer's overall system.

